



QuickStart Guide – Direct Connection

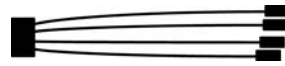
1. Unpack all items



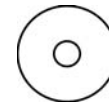
Musi-Can



Power cord and Ethernet crossover cable

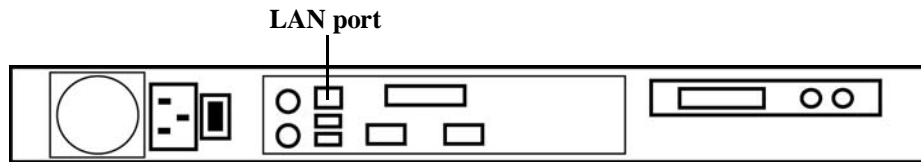


Audio card connectors

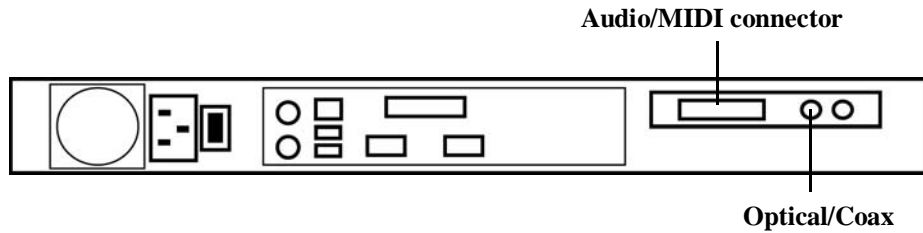


Software and Documentation

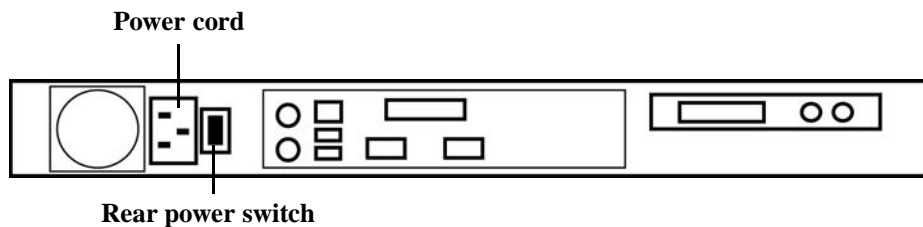
2. Connect Ethernet crossover cable to LAN port on Musi-Can and to LAN/Ethernet port on your PC/Mac



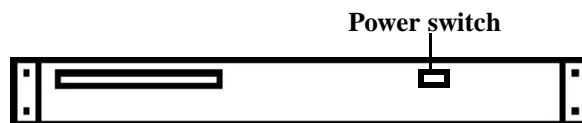
3. Connect audio/MIDI/optical/coax cables



4. Insert power cord, plug into outlet, turn on rear switch

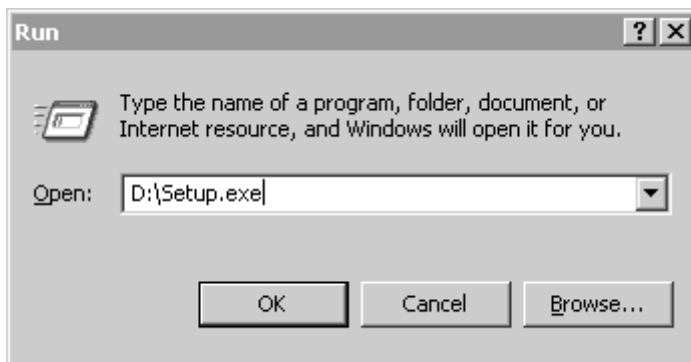


5. Press power switch in front and let Musi-Can boot



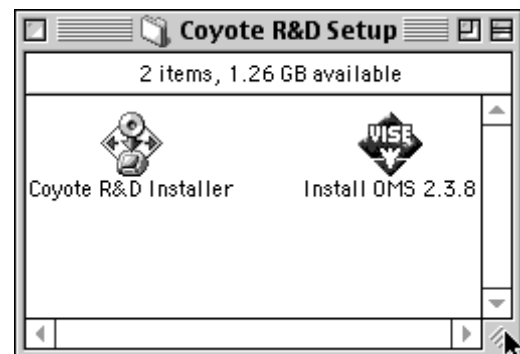
6. Insert the Coyote R&D drivers disk into your PC/Mac

Windows



(CD will autostart Setup.exe. If autostart is turned off, select Setup.exe from the Start button, Run.)

Mac



(Double Click Coyote R&D Installer)

7. Follow the on-screen instructions for installing drivers

Your Musi-Can is now ready for use. Depending on your configuration, you will either boot into the standard Windows Explorer desktop, or if Gigastudio was preinstalled at the factory, you will boot straight into Gigastudio.

For more information on how to use Gigastudio and the supporting software on the Musi-Can, please see the Coyote R&D Musi-Can User's Guide.